

Primer

AQUAPRIMER 2900 & GORI 615



Primers for tomorrows needs

Teknos' standard flow coat primers have been developed to meet the growing demand for high quality wooden windows and doors. Its robust formulation can be applied on a wide variety of application equipment.

Practical formulations

Teknos flow coat primers offer good equalisation, hiding power, sandability, and run-off.

The primers are formulated to offer a certain reduction in discoloration from water soluble tannins and extractives from hardwood and around knots in softwood (1)

AQUAPRIMER 2900 / GORI 615 flow coat primers are available in a range of opaque and translucent shades.

The value of higher speed

We all know how important it is that your manu-

facturing process runs smoothly and fast, but it is equally important that the surface coating process applied is of high quality. Applied with flowcoat AQUAPRIMER 2900 / GORI 615 are good foundations for continuous fast production processes with no compromise on quality and durability.

EU regulations

Teknos products comply with the VOC Directive and we work continuously to ensure that our products comply with REACH regulations.

Give us a call

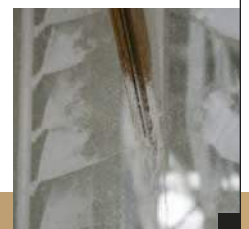
A call to Teknos is a quick and easy way to get sound advice if you are considering using AQUAPRIMER 2900 / GORI 615 or any other Teknos coating product.

Our technical support organisation are always ready to support you in designing your optimal coatings solution and application system.



▲ The primer offers a high colour equalisation effect

To secure coverage of end grains and V-joints the primer should be flowcoated ▼





Features and benefits

Features	Benefits
Excellent run off and wetting properties	This ensures a trouble free priming process with excellent surface appearance – fine crafted for the subsequent layers
Increased colour pigmentation levels can be obtained thanks to a high dry content formulation	High colour equalisation effects can be incorporated in the colour formulation from translucent to opaque colour, returning a more even colour primed surface
Implementation of a high end de foaming system ensures a highly persistent formulation	Ensures a smooth and fast manufacturing process without having to build in corrective actions during operation
Formulated to reduce the colour migration from tannin extractives (1)	A high quality primed surface reducing problems with migration discolouration coming through the topcoat

(1) To obtain a higher reduction in discolouration from water soluble and extractives around knots in softwood we recommend to use ANTISTAIN AQUA 5200 or GORI 640/641. Indentation to obtain a higher reduction in discolouration from water soluble tannins and extractives in hardwoods we recommend to use ANTISTAIN AQUA 2901 or GORI 642/643.

AQUAPRIMER 2900 / GORI 615

Product	AQUAPRIMER 2900	GORI 615
Content	Synthetic binder, water	Synthetic binder, water
Colour	Translucent and opaque shades	Translucent and opaque shades
Packing	2.7, 9, 18, 108, 600, 1000 l	2.7, 9, 18, 108, 600, 1000 l

Recommended coating systems

	Softwood 3-layers Translucent / Opaque	All wood species 4-layers Translucent / Opaque	Softwood 3-layers Translucent / Opaque	All wood species 4-layers Translucent / Opaque
Wood preservative * / Impregnation *	GORI 356 / 605	GORI 356 / GORI 605**	TEKNOL AQUA 1410	TEKNOL AQUA 1410
Primer	GORI 615	GORI 615	AQUAPRIMER 2900	AQUAPRIMER 2900
Intermediate		GORI 650		AQUAFILLER 6500
Top-coat	GORI 660	GORI 660	AQUATOP 2600	AQUATOP 2600

* Use biocides safely. Always read the label and product information before use.
** Only softwood.